



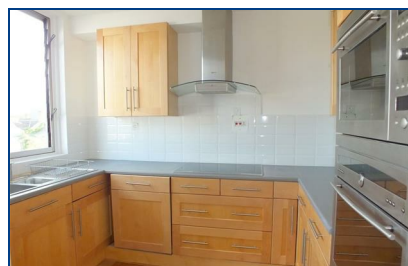
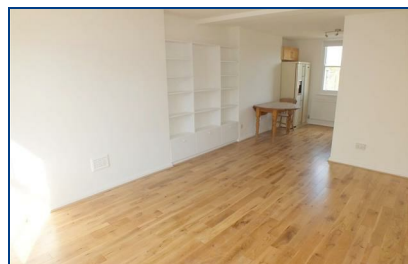
**Southampton Road, , London, NW5 4JR**

**£3,300 Per Week**

A spacious three bedroom property spread over 3 floors, large living room with kitchen in L shaped area off the living room. Two bathrooms and a good sized private roof terrace

Available furnished or unfurnished  
 For a family or sharers

Available beginning of March



Energy Efficiency Rating		Environmental Impact (CO <sub>2</sub> ) Rating	
Score	Rating	Score	Rating
92-100	A	35-45	A
81-91	B	26-35	B
69-80	C	21-25	C
55-68	D	16-20	D
41-54	E	11-15	E
27-40	F	6-10	F
13-26	G	1-5	G
Not energy efficient - higher running costs		Not environmentally friendly - higher CO <sub>2</sub> emissions	
England & Wales	EU Directive 2002/91/EC	England & Wales	EU Directive 2002/91/EC